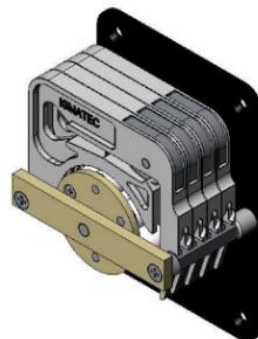


## GENERAL DESCRIPTION

This multi-channel panel mount peristaltic pumps provides repeatable, synchronous flow across four channels. The pump head features 12 roller design to provide low friction and wear for smooth operation and low pulsation with long tubing life. The stepper motor provides precise fluid delivery with a compact footprint.

Use with a variety of Ismatec® 3-stop tubing set formulations to suit your flow rate, chemical compatibility, and fluid compliance requirements.



## MARKETS & APPLICATIONS

Designed for simple integration into original equipment manufactured systems where clean, low-shear, and high accuracy fluid dispensing is needed. Key applications include cell therapy, microfluidics, bioreactor additions, protein purification, automatic sampling, and diagnostic equipment.

## FEATURES & BENEFITS

- 12-roller design minimize pulsation
- Click-N-Go tubing cassettes allow quick changeovers
- Compact design for efficient use of space
- Stepper Motor allows for precision repeat and rapid dispensing applications

## ORDERING INFORMATION

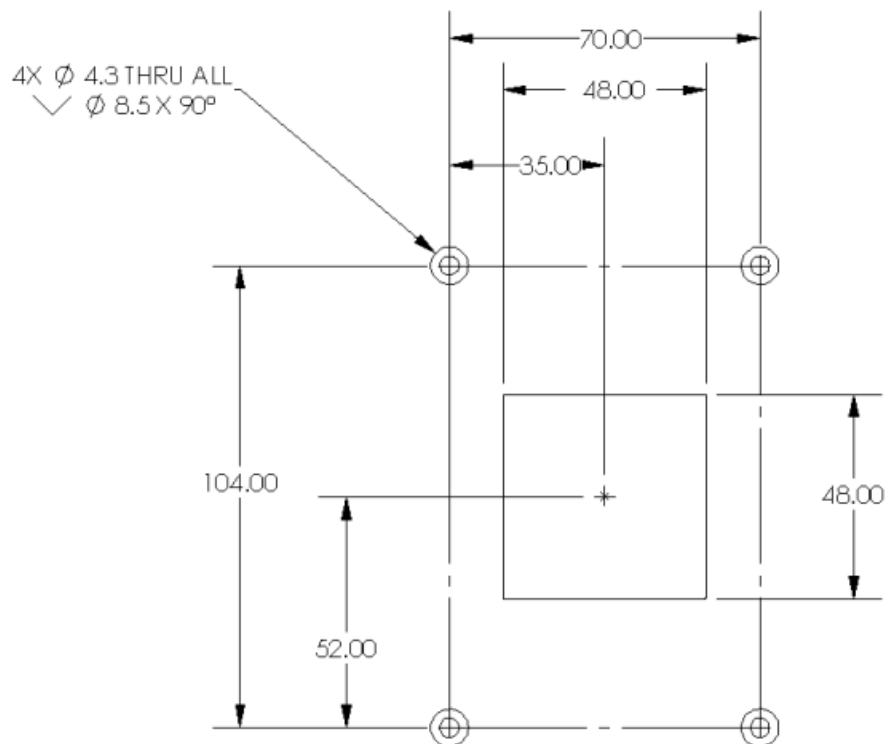
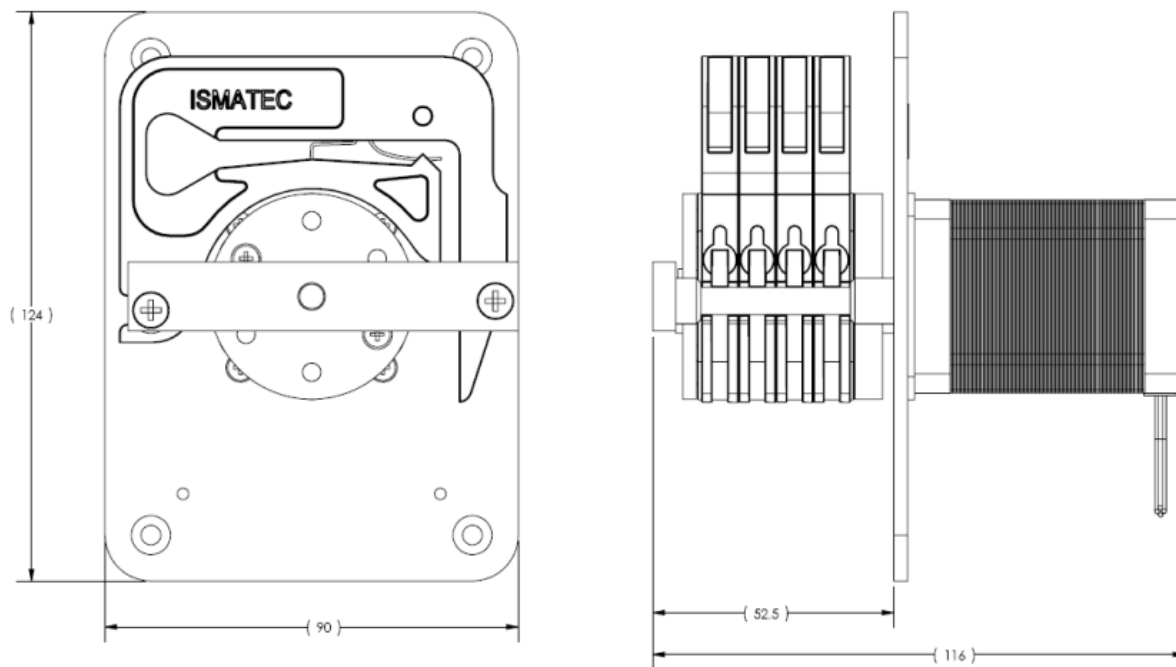
Item number	Description
MFLX07519-90	Multichannel Cartridge Pump Head for 3-stop Tubing with Stepper Motor

Order the three-stop tubing size and formulation to suit your application needs (sold separately).

### Accessories:

Item number	Description
MFLX78016-98	Replacement MS/CA Click-N-Go Cassette Cartridge, 3-Stop, POM-C
MFLX07624-64	MS/CA Pressure Lever Cassette Cartridge, 3-Stop, POM-C
MFLX07624-96	MS/CA Pressure Lever Cassette Cartridge, 3-Stop, PVDF
MFLX78016-96	MS/CA Click-N-Go Cassette Cartridge, 3-stop, PVDF

## DIMENSIONS/DRAWING



## SPECIFICATIONS

Specification	Description
<b>Performance specifications</b>	
Flow capacity (per channel)	0.0001 to 24 mL/min
Tubing	3-Stop Tubing
Number of channels	4
Number of rollers	12
Maximum pressure	1.0 Bar (15 psi)
Speed range	1.0 to 160rpm
Speed control accuracy	±1.0%
<b>Electrical specifications</b>	
Motor type	1.8° Stepper Motor
Power	36 Watt 24 VDC
Duty Cycle	Continuous
<b>Physical specifications</b>	
Dimensions (L x W x H)	116.0 x 90.0 x 124.0 mm
Weight	1.02 Kg (2.25 lbs)

## NOMINAL FLOWRATES

3-Stop	Stopper Color	12 Roller ml/min	
ID mm		min	max
0,13	orange-black	0.0001	0.093
0,19	orange-red	0.0003	0.21
0,25	orange-blue	0.0004	0.38
0,38	orange-green	0.0009	1
0,51	orange-yellow	0.0016	2
0,64	orange-white	0.0024	2
0,76	black-black	0.0033	3
0,89	orange-orange	0.0044	4
1,02	white-white	0.0056	6
1,14	red-red	0.0067	7
1,30	grey-grey	0.0083	8
1,42	yellow-yellow	0.0094	9
1,52	yellow-blue	0.01	10
1,65	blue-blue	0.012	12
1,85	green-green	0.013	13
2,06	purple-purple	0.015	15
2,29	purple-black	0.017	17
2,79	purple-white	0.021	21
3,17	black-white	0.024	24